

TO DO A GOOD JOB
YOU NEED GOOD VISIBILITY

Customer testimonial: Ijsselland Regional Hospital

About Ijsselland Regional Hospital

The Ijsselland Regional Hospital in Capelle aan den IJssel, The Netherlands is a general regional hospital with 332 beds. The hospital has additional outpatient clinics in Rotterdam, Krimpen aan den IJssel and in Krallingen. The Hospital offers a wide range of medical specialty care. Their focus is on working together to provide the best possible care for each patient and their loved ones. With 1892 employees, 151 medical specialists and 190 volunteers, they make every effort to achieve this every day with great energy and commitment.

Experience

We are very satisfied with the performance of ScopeControl. We chose it because it's a tester that can be **operated easily and is suitable for all brands of endoscopes**. It was also very important to us that it could be integrated into the normal working process. The measurement must be done within one minute, otherwise it has no value to put it on a CSSD.

Furthermore, a tester has to be on a CSSD to be used after every operation, otherwise you would be testing an endoscope once a year.

The machine tests whether it lets enough light through and checks whether the quality is still acceptable, amongst other parameters. You can't measure that with a physical check. So with this device we can simply continue to measure whether we have completed all the individual steps properly. Furthermore, we can also see whether the quality decreases and whether the endoscope must be rejected or whether it can be used a few more times before it is rejected.

That is very important, because otherwise there is an endoscope during an operation that no longer meets the requirements and that gives a lot of unrest and delay for the patient. And also frustration for the surgeon.

Monique van Liefeland

Team leader CSD, Ijsselland Hospital

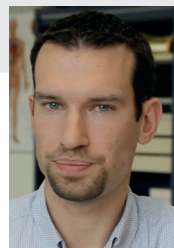
Results in the OR

I recently spoke to the surgeon who helped decide on this at a meeting of the "minimally invasive surgery committee" and asked if they noticed any difference. After some thought, he indicated that they did notice differences. In particular, **they never have defective endoscopes in the operating room anymore**. So they didn't notice a difference in quality, but they did notice that they never had to reject endoscopes in the place where they really can't accept that, in the OR.

I would certainly recommend the ScopeControl to colleagues, because it is the only way to test endoscopes in an unequivocal manner within the CSD work process. We believe that every patient should receive the same care and for that, with verifiable quality, our equipment should be tested. It has to be consistent quality. Dovidq delivers.

Involving colleagues

I think it's very important that you involve your colleagues in the CSD. The employees who go into the field of performing endoscopes every day. They have to be aware of why they are doing this work and why they have to apply this test.



Guido Kortleven

*Head of Medical Instrument Management
Ijsselland Hospital*

More information

Want to know what impact ScopeControl, or any of our other automated solutions can have on your CSSD?

Send us an email at info@dovidqmedical.com or visit www.dovidqmedical.com to learn more.

"Every hospital where endoscope surgery is done should have such a device to check that the optics used are of optimal quality."

*Prof. Dr. David van der Zee - Pediatric Surgeon
University Medical Center Utrecht*