

EndoscopeManager

Inventory & Quality cloud platform

EndoscopeManager is the **management cloud platform** for your endoscopy equipment inventory. It stores all test data from your DovidEQ testing systems and allows you track your equipment **performance and quality**.

EndoscopeManager offers **traceability and predictability** like you've never had before while making you **compliant to regulations**.



Comply to regulations and IFU



Full traceability of your equipment



Guarantee quality required for surgery



Generate test reports with the click of a button



No more surprises



Auto start repair/replace workflows



What can EndoscopeManager do for you?



How will EndoscopeManager improve your process?

Storing Test Data

EndoscopeManager automatically stores all test data from your connected Dovideq systems. Endoscopemanager sorts these per serial number, so you can easily access the data and reports you need.

Traceability & Predictability

With EndoscopeManager you'll be able to trace your equipment and its performance at all times.

This gives you detailed insights in your inventory and allows you to make accurate predictions on when repairs or replacements are needed.

Regulatory Compliance

Because all your test data is stored and readily accessible in EndoscopeManager, you'll be compliant to regulations.

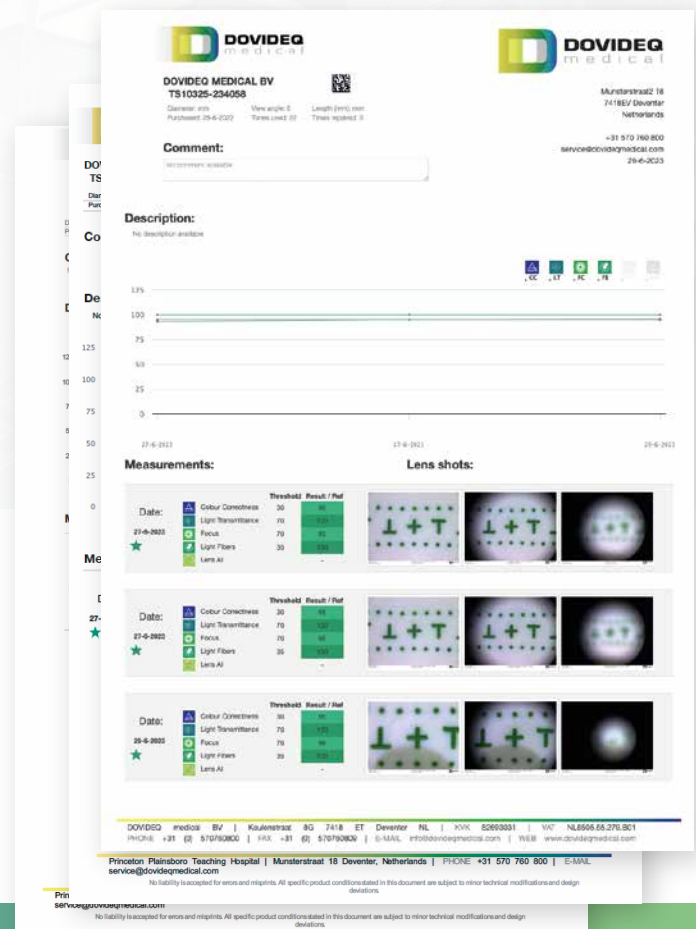
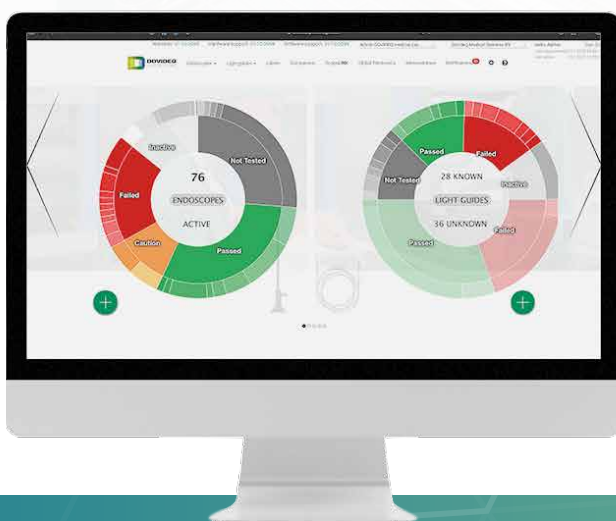
Overall benefits

- Compliant and accurate reporting
- Increased predictability, traceability and quality control
- Generate test reports with one click
- Guarantee quality and fit for purpose
- No more surprises

EndoscopeManager Reporting

EndoscopeManager lets you generate test reports with the click of a button. Simply select the tests you want to display in a report and click 'create report'.

A report will be generated instantly showing you the selected test results and a graph depicting the test results over time.



Bringing **Traceability, Predictability**
and **Quality Control** all in one system.

Learn more on www.dovideqmedical.com